



EVENTS & PRIVATE HIRE

the *Fable*
Bar & Restaurant

52 Holborn Viaduct London EC1A 2FD
www.thefablebar.co.uk
0845 468 0105

ALL ABOUT US

OVERVIEW

Inspired by fairytales & the fables of Aesop, The Fable is a beautiful bar & restaurant in the heart of the City. Spread across three floors with floor-to-ceiling windows looking out across Holborn Viaduct, The Fable has become a destination for everything from private parties & chic corporate events through to wedding receptions & Christmas parties. In keeping with fast-paced city life, The Fable is also open from 7am until late for brisk breakfast meets, leisurely lunches, after-work cocktails & late-night suppers for a venue that works as hard as you do.

FOOD & DRINK

Menus, inspired by seasonal, British food & crafted by executive chef Robert Mitchell, are influenced by the latest trends both here in London & across the globe. Similarly, cocktails incorporate old classics & tried-&-trusted favourites as well as the new, the unexpected & the surprising. In addition to table service, The Fable also offers interactive experiences for exciting events & group gatherings – from mixology masterclasses at our destination stations through to pairings & tastings in our wonderful wine shop. Choose from a range of packages to suit all tastes & budgets; or allow our dedicated events planners to turn a spark of an idea into something truly memorable.



STYLE

Housed inside a 15th-century former dwelling house & designed by London-based architect firm Fusion, The Fable strikes the perfect balance between classic & contemporary across three striking floors; its interiors have been kitted out with the very best British designers, from Mulberry-upholstered chairs through to Tom Dixon light fittings & House of Hackney wallpaper.

EVENTS

Elegant & charming, a number of bookable spaces are available for events: smaller, more intimate groups at Aesop's Table, Bottles & Blooms & the Mixology Station; mid-sized cocktail & canapé receptions on the Ground Floor, First Floor & Mezzanine Level; or a full-on party with exclusive hire for 1,000.

From boardroom presentations to corporate planning sessions; from sit-down lunches to theatre-style dinners; from drinks receptions to networking evenings.

The Fable ignites creativity & encourages productivity.

FILMING & PHOTOGRAPHY

Bedecked with vintage finds & one-of-a-kind pieces, The Fable is regularly used for photoshoots & filming for stylish scene - setting.







LOCATION

The Fable, 52 Holborn Viaduct, London EC1A 2FD

Farringdon Station is a short four-minute walk to The Fable. Farringdon Tube station runs Circle, Hammersmith & City & Metropolitan. Farringdon Station also runs City Thameslink lines to Bedford & Brighton, Luton, Wimbledon & Sutton, St Albans, Mitcham & Sutton & Kent. The introduction of the high-frequency, high-capacity Crossrail in 2018 will also make it easier to reach for those living west.

NCP Car Park in Farringdon operates 24 hours.

The address is Farringdon, 1 Bowling Green Lane, Clerkenwell, London EC1A 0BD

CONTACT DETAILS

Charlotte Şik – Sales & Events Manager

T. 020 7651 4940

E. charlotte.sik@drake-morgan.co.uk



THE SPACES

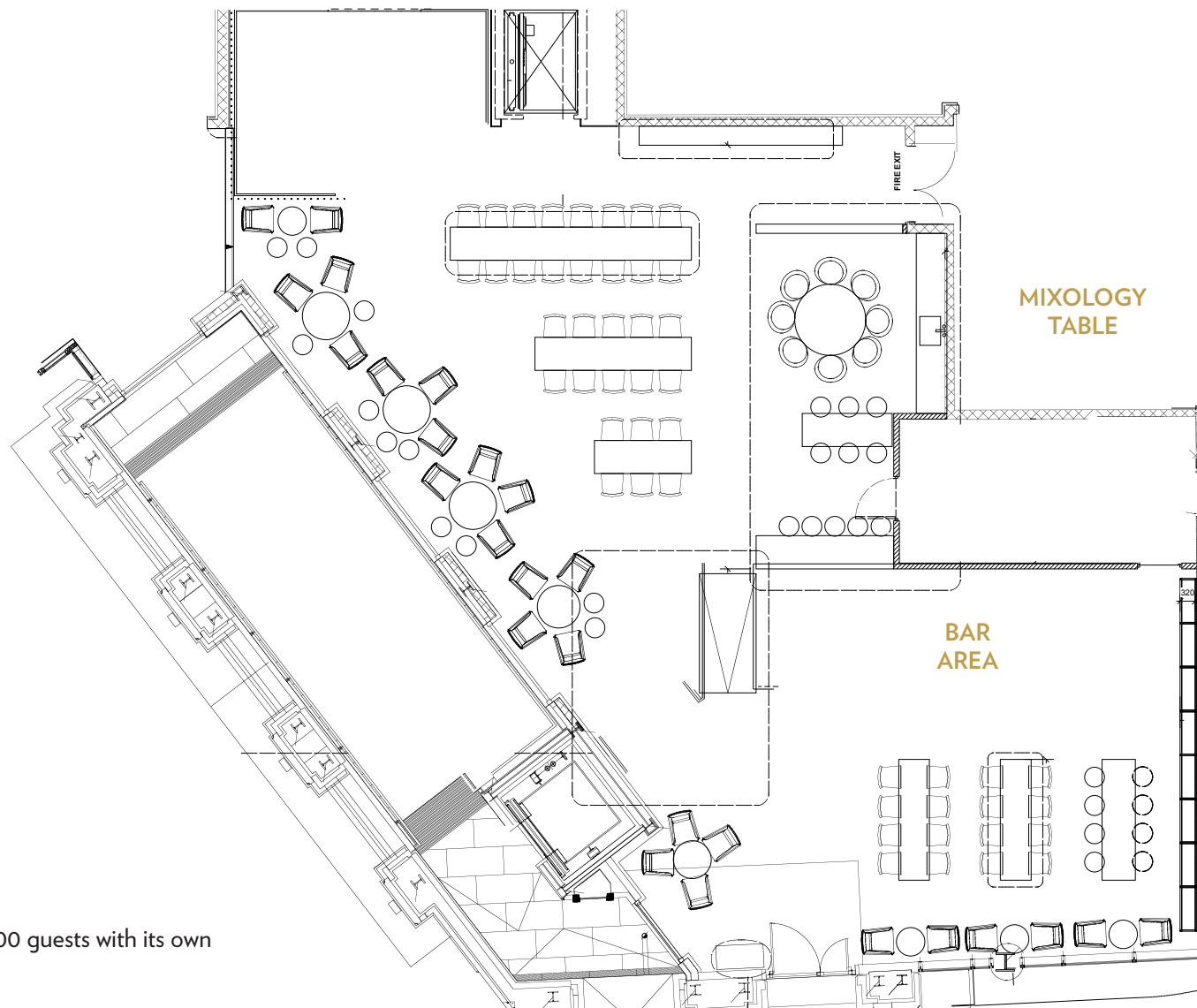
There are three distinctly different floors at The Fable, each with its own elegant events space for celebrations & occasions of any shape & size. Floor-to-ceiling windows are a constant, with plenty of natural light streaming in during the day. Both the Top Floor & Ground Floor benefit from their own private entrances, & all three feature a dedicated bar with exclusive use for your event.

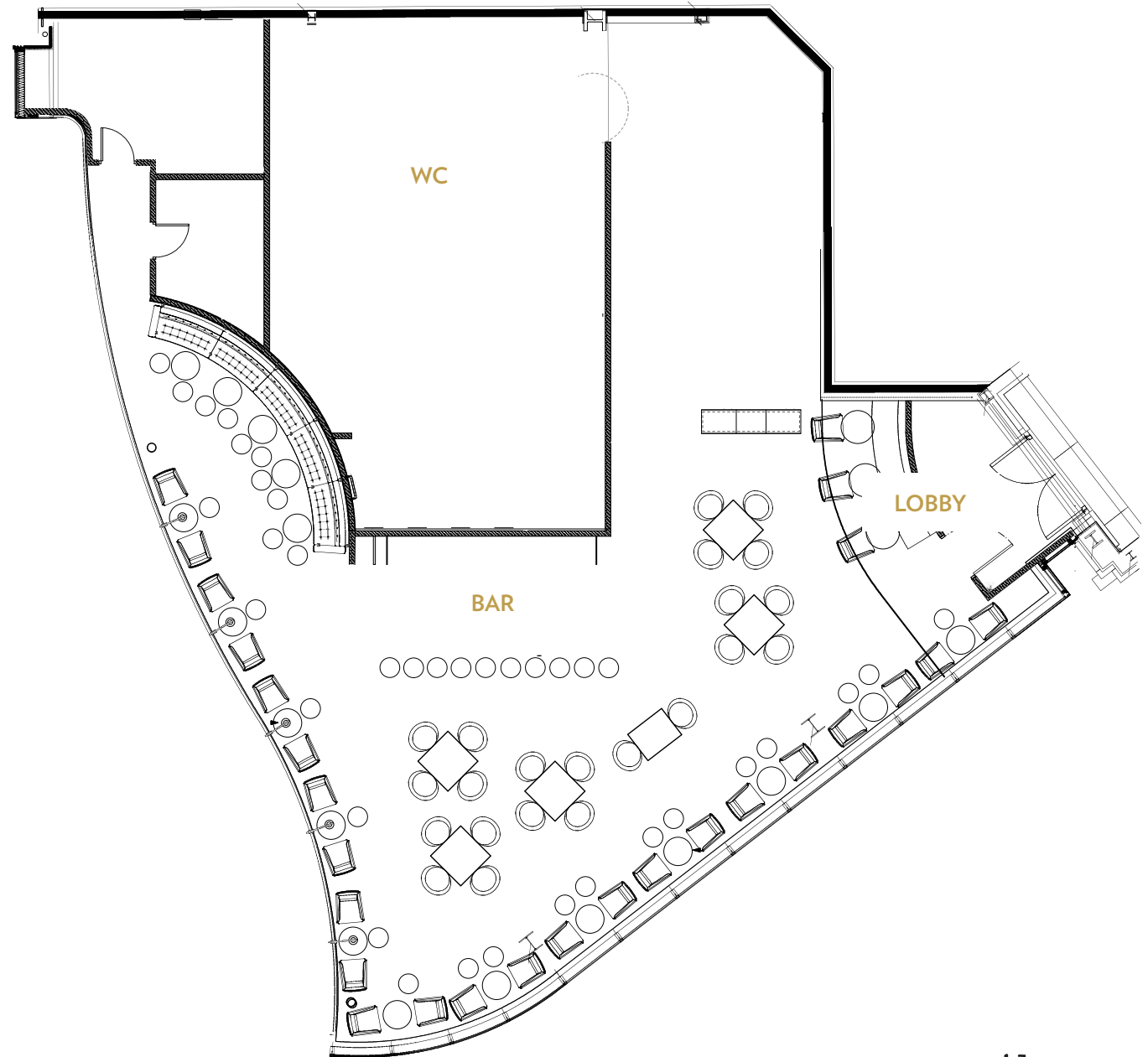
AUDIO VISUAL CAPABILITIES

- Each floor has its own built-in Bose sound system, giving customers control of the music levels & the ability to connect their own devices.
- Sharp 60" plasma screen on wheels can be used on all three floors
- The Top Floor has its own built-in projector & screen, along with HDMI cables for connection to laptops & other devices
- Handheld microphones can be supplied which connect directly to each floor's sound system, great for quiz nights & presentations
- Complimentary Wi-Fi throughout

TOP FLOOR

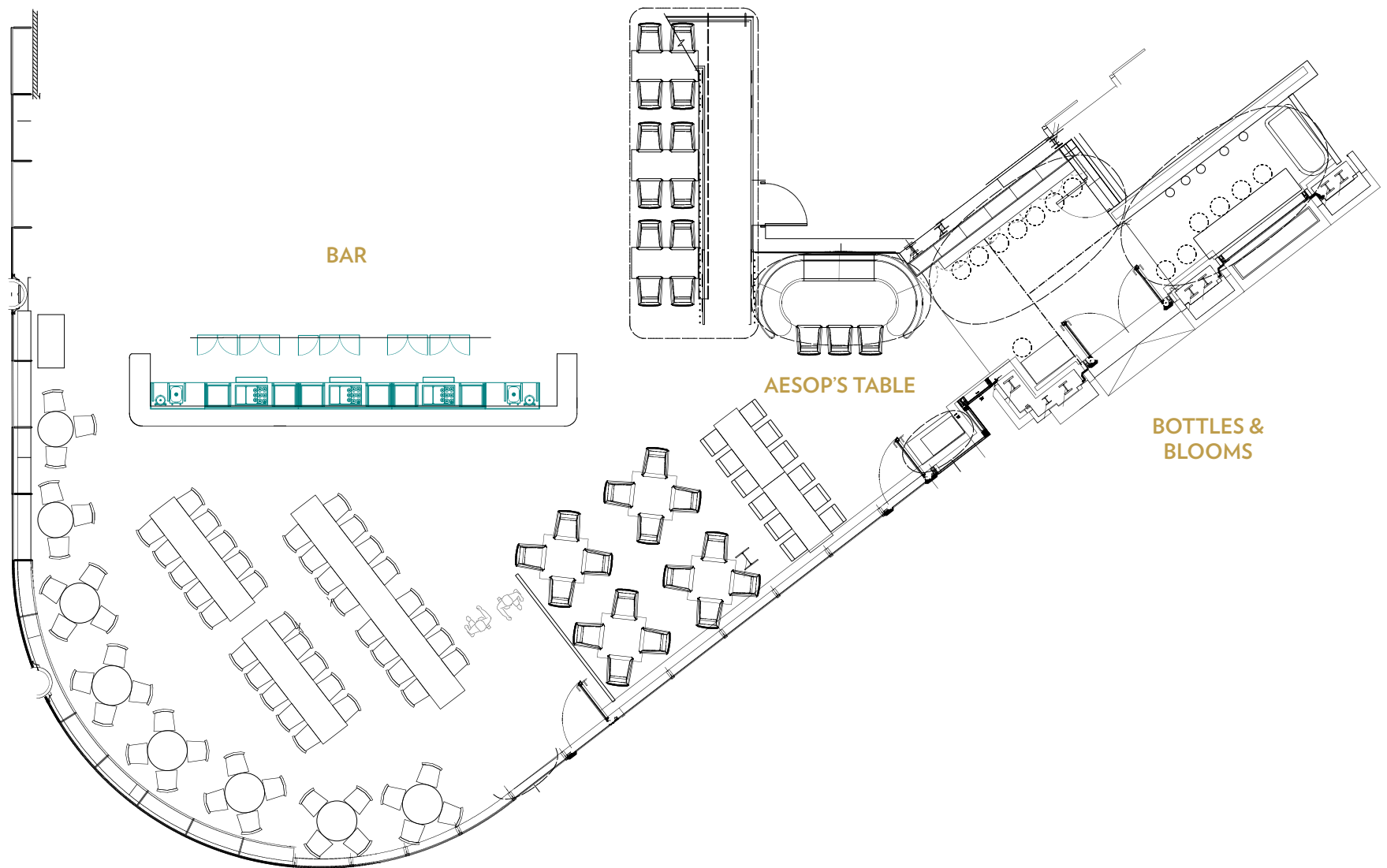
- Perfect for private drink receptions of up to 300 guests with its own private entrance & own private bar
- Quiz evenings for up to 120 people. In-built Bose speakers & hand-held microphone for the quizmaster
- Mixology classes for up to 40 people
- Presentations of up to 50 guests theatre-style with adjoining area for refreshments





MEZZANINE FLOOR

- Standing drink receptions & networking events for up to 200 guests
- Sit-down lunches or dinners of up to 80 guests
- Boardroom meetings for up to 20 people



GROUND FLOOR

- Standing drink receptions for up to 400 guests
- Sit-down lunches or dinners of up to 220 guests



DAY DELEGATE PACKAGES

GOOD MORNINGS PACKAGE AT £26PP (MINIMUM OF 10 PEOPLE)

FOR THOSE BRIGHT AND EARLY MEETINGS, START YOUR DAY AS YOU MEAN TO GO ON

- Exclusive use of the top floor from 08:00 – 12:00
- A selection of teas and freshly brewed coffee with pastries on arrival
- Half a bottle of Belu still or sparkling water per person
- Bowl of whole fruits
- Complimentary WiFi
- Flip chart and assortment of pens and stationery
- Audiovisual – LG 48” screen and in-built speakers

MEET & GREET PACKAGE AT £46PP (MINIMUM OF 10 PEOPLE)

FOR THOSE LOOKING FOR SOMETHING A BIT MORE SUBSTANTIAL, KEEP THE ENERGY UP AND GET THROUGH YOUR AGENDA IN RECORD TIME

- Exclusive use of the top floor from 08:00 – 17:00
- A selection of teas and freshly brewed coffee alongside pastries and bacon and sausage sliders
- Mid-morning refresher of tea, coffee and biscuits
- Hot and cold buffet served for lunch alongside a selection of soft drinks
- Afternoon tea, coffee and something sweet
- Half a bottle of Belu still or sparkling water per person
- Complimentary WiFi
- Flip chart and assortment of pens and stationery
- Audiovisual – LG 48” screen and in-built speakers



MADE *Lovingly*
THE D&M COLLECTION
DRAKE & MORGAN BARS & RESTAURANTS

52 Holborn Viaduct London EC1A 2FD
www.thefablebar.co.uk
0845 468 0105