



*HAPPY*  
EVER AFTER  
from  
DRAKE & MORGAN



---

*THE*  
PARTY  
*EVERYONE WILL*  
REMEMBER  
*FOREVER*

---

Our beautiful bars & restaurants provide striking interiors, fabulous food, contemporary cocktails and an extensive wine list.

Our experienced events team provides guidance for every step of your wedding journey, from the initial concept to the big day itself. All you have to do is relax and enjoy hosting a truly special celebration.

We take pride in creating unique tailor-made experiences for each and every one of our couples.







---

*WOW FACTOR*

# LOCATIONS & *BREATHTAKING* SETTINGS

---

Start your adventure in the most delightful setting. Our inspiring collection of bars & restaurants presents a huge choice of lovingly crafted venues throughout London and Manchester.

Housed in enviable city-centre settings, close to the best transport links, your guests will have no trouble getting to and from your celebration. And with a host of adaptable, quirky spaces, including stylish open plan bars, cosy restaurants and stunning alfresco terraces, we can cater for anything from intimate drinks and canapés to sit down dinners and dancing.

Have St Paul's Cathedral as the backdrop to your wedding photographs, gaze out over the beautiful greenery of Canada Square Park as you savour delicious canapés, or toast your new life together on an all-weather alfresco terrace.



---

*FROM INTIMATE RECEPTIONS*

FOR 50

to

*LAVISH OCCASIONS*

FOR 500

---

*WE'VE GOT IT COVERED*





---

*COSY PERSONAL*  
TOUCHES  
to  
*MAKE*  
YOUR DAY

---

We believe in taking the time to tailor your wedding to your exact requirements, from the smallest personal touches to the more lavish gestures.

Innovative handcrafted cocktails; cosy candlelit corners; soft lighting and faux fur blankets – your wedding will be extra special with Drake & Morgan's signature sparkle.

Years of event organising experience means our little black book is bursting with contacts which means we can assist with anything and everything, from DJs to florists, stationery, wedding cake makers and even dressmakers.







—  
*A WEDDING*  
FEAST  
*THAT'S*  
TAILORED  
*TO YOU*

We offer complimentary food and drink tastings for up to four people, so you can try all options before making your final selection. We have a myriad of dining alternatives, from three-course extravaganzas, creative canapés, and innovative bowl food, to hearty sharing platters and wholesome late night nibbles.

There's also our cheese and charcuterie stations and indulgent buffets inspired by our travels around the world. If you have a preferred caterer, including kosher and halal, they are welcome to use our kitchens. We also offer a dry hire option for all our venues.

Our mixologists are experts at handcrafting classic and contemporary cocktails and mocktails. Inspired by the season or created to suit your theme, our innovative drinks will delight and surprise your guests.



---

*A WEDDING*  
PACKAGE  
*FOR EVERY*  
PURSE

---

ALL PACKAGES INCLUDE

Dedicated 'I Do' planner to help you  
with your special day.

Exclusive hire of the venue\*

Furniture, linen, crockery including  
glassware and tea lights

Cake stand and knife, name cards  
and table numbers

Complimentary tasting for up to 4 people

Cash bar facilities if required

*\*Please note a minimum spend will apply  
and varies per D&M location.*

*Various upgrades also available including  
cheese and charcuterie stations.*



---

*ASSCHER*  
PACKAGE

---

£80.00 pp

Crisps, nuts and olives

A glass of prosecco or beer on arrival

Seasonal three-course menu

Half a bottle of house wine during dinner

A glass of prosecco during the toasts

Half bottle of water

Tea or coffee



---

*MARQUISE*  
PACKAGE

---

£100.00 pp

2 x glasses of prosecco, cocktails  
or premium beer on arrival

3 x canapés on arrival

Seasonal three-course menu

Half a bottle of house wine during dinner

A glass of prosecco during the toasts

Half bottle of water

Tea or coffee

---

THE MARQUISE INCLUDES

Sparklers, 20 x flip flops,  
Mixo table set up for guests on arrival



---

*RADIANT*  
PACKAGE

---

£120.00 pp

A cocktail and canapé reception (1 hr)

Seasonal three-course menu

Half a bottle of selected red or  
white wine during dinner

A glass of prosecco during the toasts

Half bottle of water

Tea or coffee

---

THE RADIANT INCLUDES

Sparklers, 20 x flip flops,  
Mixo table set up for guests on arrival



DEVONSHIRE SQUARE, LONDON

DEVONSHIRE  
TERRACE BY  
DRAKE & MORGAN

Devonshire Terrace in Devonshire Square is a unique wedding venue in the heart of the city. Steeped in history, it was built in the early 1800s to store goods shipped from Bengal, including silk, ivory and mother-of-pearl.

With a glass roof over the western courtyard, spectacular views of iconic London landmark 'the Gherkin', and a license for weddings and civil ceremonies, it is a magical setting for your special day.

CAPACITIES

Standing - 250  
Seated - 150  
Ceremony - 150

NEAREST STATION

Liverpool Street



110 SOUTHWARK STREET, LONDON

the refinery

BANKSIDE

At the foot of the landmark Blue Fin Building in the midst of London's Bankside, The Refinery exudes sophistication and elegance.

The beautiful alfresco terrace is ideal for summer receptions, whilst the semi-private mezzanine level, seating 12 guests in exclusive style, overlooks the buzz of the main restaurant. Alternatively, take the whole space for a beautifully contemporary wedding setting.

CAPACITIES

Standing - 300  
Seated - 150

MEZZANINE

Standing - 35  
Seated - 12

NEAREST STATIONS

Southwark  
Blackfriars  
Waterloo



THE PARK PAVILION,  
40 CANADA SQUARE PARK, LONDON

*the parlour*  
bar • kitchen • cocktail lounge

With an expansive alfresco terrace, complete with its own bar overlooking Canada Square Park, The Parlour in Canary Wharf is picture perfect. Whilst ideal for summer weddings, it's a great all-year round space too with its secret garden-inspired lounge that brings the great outdoors inside.

The Parlour's versatile layout means it can be used as one large space or divided into three more intimate sections.

CAPACITIES

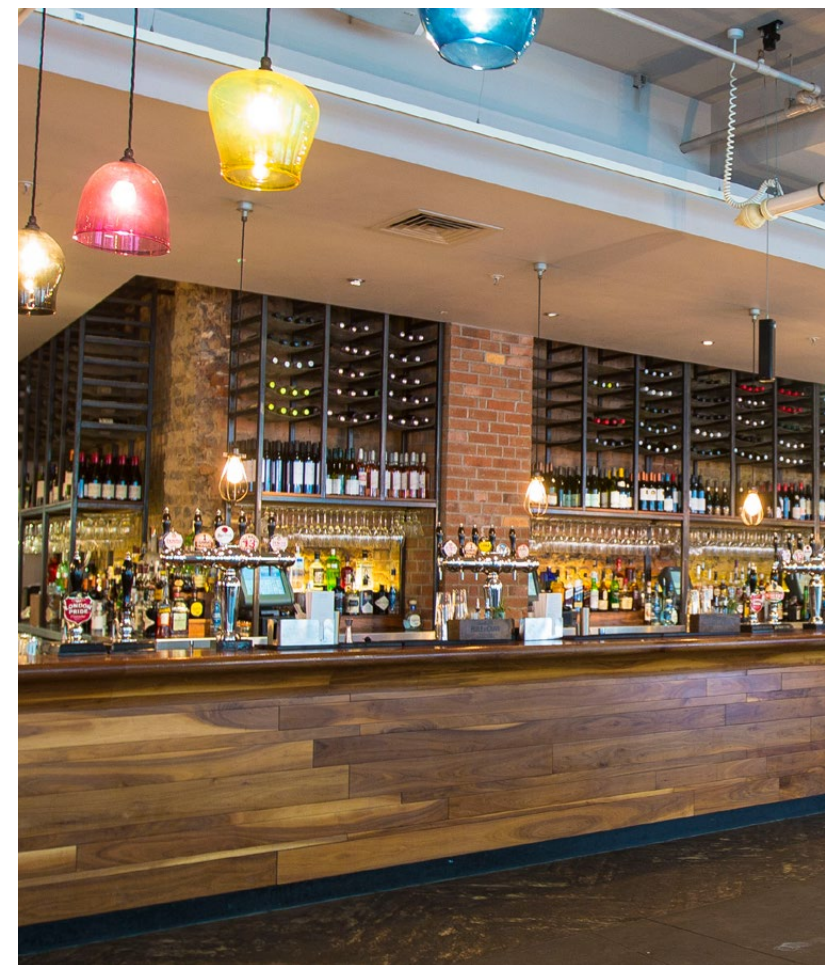
Standing - 550  
Seated - 200

ALFRESCO TERRACE

Standing - 450

NEAREST STATIONS

Canary Wharf  
West India Quay



58 GRESHAM STREET, LONDON

THE ANTHOLOGIST

Exposed brick, antique mirrors, a marble mixology table, a lover's swing seat and two striking cocktail lounges are just some of the statement pieces to be discovered in The Anthologist.

With a variety of flexible spaces catering for up to 300, The Anthologist is a gorgeous setting in the heart of the city, just a stone's throw from Bank station. If you are looking for an intimate space, the private dining room seats 30 and comes with a 1950s kitchen that doubles as a bar, or the cosy mezzanine level seats 12.

CAPACITIES

Standing - 800  
Seated - 150  
Ceremony - 129

PRIVATE DINING ROOM

Standing - 60  
Seated - 30

NEAREST STATIONS

Bank  
St. Paul's  
Cannon Street



41 GRACECHURCH STREET, LONDON

# THE FOLLY

Housed on the corner of Gracechurch Street, opposite Monument station, The Folly is a botanically inspired haven, featuring fabulous foliage, beautiful floral wallpaper, plant pot lampshades and a beehive-inspired bar.

From its exclusive private dining room to its candle-filled hidden alcoves, The Folly provides both a deeply romantic setting and an expansive party space.

## CAPACITIES

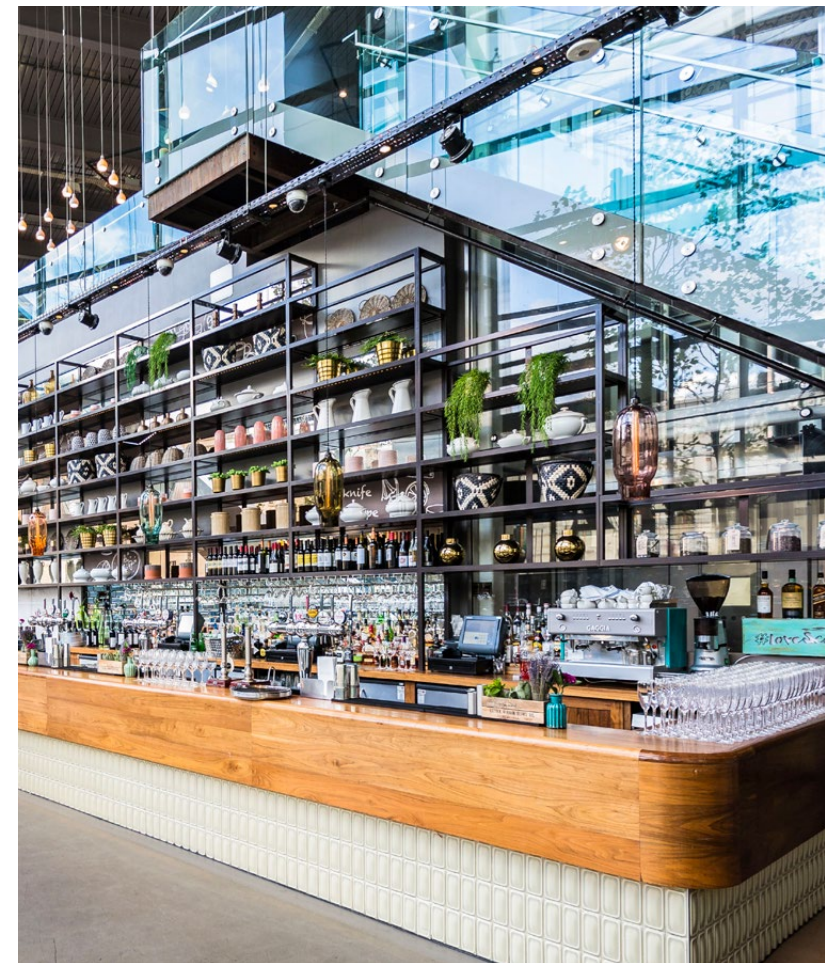
Standing - 1,100  
Seated - 220

## PRIVATE DINING ROOM

Standing - 70  
Seated - 30-35

## NEAREST STATION

Monument



110 BISHOPSGATE, LONDON

# the drift

With two floors of stunning interiors and beautiful décor, including opulent gold wallpaper, elaborate candelabras, crystal glassware and soft lighting, The Drift provides a luxurious setting for any wedding celebration. Its location is perfect too, in Heron Tower, the heart of the iconic Bishopsgate.

From an intimate wedding breakfast for 14 in the hideaway dining area to an exclusive hire for a grand wedding reception of up to 450 people, at The Drift anything is possible.

CAPACITIES  
Standing - 400  
Seated - 150

CABANA  
Standing - 20  
Seated - 15

## NEAREST STATION

Liverpool Street



52 HOLBORN VIADUCT, LONDON

# the Fable

Bar & Restaurant

Inspired by fairytales and the fables of Aesop, The Fable in Farringdon is the ideal setting to start the story of the rest of your lives. A dazzling wonderland, there is a range of inspiring spaces spread across three fabulous floors – from the Library and the Never-Ending Story through to the Magic Kingdom and Enchanted Forest – with décor handpicked from the very best British designers.

Whether it's an exclusive party on the mezzanine or one that takes over the whole restaurant, The Fable will help you create your happy ever after.

## CAPACITIES

### STANDING

Top Floor - 250  
Mezzanine - 150  
Lower Ground - 400

Total - 800

### SEATED

Top Floor - 100  
Mezzanine - 70  
Lower Ground - 160

Total - 330

## NEAREST STATIONS

Farringdon  
Chancery Lane  
St. Paul's



5 BROCK STREET,  
REGENTS PLACE, LONDON

# the refinery

REGENT'S PLACE

Tucked away from the bustling Euston Road, The Refinery at Regent's Place offers a stylish urban backdrop for your wedding celebrations. Scandi-inspired interiors, floor-to-ceiling windows, polished natural timbers, reclaimed flooring and antique copper accents make this a great space for chic weddings.

As one of our smaller venues, it's perfect for an intimate gathering although with a standing capacity of over 300, larger parties can be accommodated too.

## CAPACITIES

Standing - 350  
Seated - 120

## NEAREST STATIONS

Warren Street  
Euston Square



6 PANCRAS SQUARE, 6 KING'S BOULEVARD  
KING'S CROSS, LONDON

## DRAKE & MORGAN AT

KING'S CROSS  
LONDON

Drake & Morgan at King's Cross is our flagship bar & restaurant. Overlooking the beautiful greenery of peaceful Pancras Square, this stunning venue features two floors, an outdoor terrace and two unique kitchen pods.

The sleek basement Green Room bar with atmospheric lighting and a striking central square bar provides a dramatic backdrop for any wedding celebration.

### CAPACITIES

Standing - 1,000  
Seated - 250

### PRIVATE DINING ROOM

Standing - 40  
Seated - 14

### NEAREST STATIONS

King's Cross  
St Pancras International



111 OLD BROAD STREET, LONDON

## THE OTHERIST

BY DRAKE & MORGAN

The Otherist is located in the heart of the city, between Bank and Liverpool Street, making it perfect for those travelling to your wedding from far and wide.

Catering for up to 300 people standing, it's a surprisingly adaptable space, complete with all the little details that make the Drake & Morgan difference.

### CAPACITIES

Standing - 250  
Seated - 100

### SUNKEN LOUNGE

Standing - 50  
Seated - 30

### NEAREST STATIONS

Liverpool Street  
Bank



9 CABOT SQUARE, LONDON

# THE PAGINATION

BY DRAKE & MORGAN

Perfectly positioned on the riverside in Canary Wharf, The Pagation is a truly picture-perfect venue complete with a stunning terrace overlooking The Thames.

An adaptable space, full of one-of-a-kind details and unique features such as industrial inspired details, exposed metals, and soft handwoven textures, this is a venue as individual as the two of you.

## CAPACITIES

Standing - 150  
Seated - 70

## ALFRESCO TERRACE

Standing - 150

## NEAREST STATION

Canary Wharf



1 ROPEMAKER STREET, LONDON

# the refinery

CITYPOINT

Statement wallpapers and furniture are complemented by soft lighting and cosy faux fur to create our chic, contemporary bar, The Refinery CityPoint. Close to a variety of hotels and transport links, it's an ideal location for you and your guests, with venue possibilities including a lounge and a private dining room as well as an open plan bar.

## CAPACITIES

Standing - 250  
Seated - 70

## PRIVATE DINING ROOM

Standing - 30  
Seated - 15

## NEAREST STATION

Moorgate



12 NEW STREET SQUARE, LONDON

## the refinery

NEW STREET SQUARE

Conveniently situated close to City Thameslink, Chancery Lane and Farringdon, with a range of hotels nearby, The Refinery New Street Square will be easy for your guests to get to and from on the day.

The gorgeous space is flooded with light, featuring high ceilings and floor-to-ceiling windows, chic décor, and a variety of seating arrangements, including a cosy lounge area hidden away upstairs and a lovely alfresco terrace.

### CAPACITIES

Standing - 180  
Seated - 100

### MEZZANINE

Standing - 30  
Seated - 20

### NEAREST STATION

Chancery Lane



PATERNOSTER SQUARE, LONDON

## the happenstance

In the shadow of St Paul's Cathedral sits The Happenstance at Paternoster Square, a stunning venue in the heart of London complete with a license for civil ceremonies and weddings. After saying your vows, head out onto the terrace to raise a toast with your nearest and dearest whilst taking in the picturesque view of London landmark St. Paul's Cathedral, then enjoy your first meal together as a married couple in our glamorous wine bar space.

### CAPACITIES

Standing - 350  
Seated - 130  
Ceremony - 80

### PRIVATE DINING ROOM

Standing - 30  
Seated - 14

### NEAREST STATIONS

Blackfriars  
St. Paul's  
City Thameslink



16 HERTSMERE RD, CANARY WHARF, LONDON

# THE SIPPING ROOM

BY DRAKE & MORGAN

From a stylish outdoor terrace overlooking the docks to an exclusive private dining room, The Sipping Room offers a variety of spaces that can be hired out as a whole or separated for smaller parties. Quirky warehouse features like exposed floorboards, timber beams and cast iron columns are complemented by carefully curated touches and unique details, including mood lighting, candles in cosy nooks and crannies, and faux fur throws. Ideally located in West India Quay and close to Canary Wharf, it is a romantic sanctuary for the most magical of wedding celebrations.

## CAPACITIES

Standing - 500  
Seated - 120

## AL FRESCO TERRACE

Standing - 500  
Seated - 200

## NEAREST STATION

West India Quay  
Canary Wharf



25 FENCHURCH STREET, LONDON

# THE MONIKER

The Moniker provides a fantastic space for all kinds of occasions. With an intimate private dining room, to the relaxed and charming lounge area.

At weekends the spacious bar & restaurant can be hired in its entirety for the most special of occasions such as a large party or wedding reception. Our dedicated events team will ensure your event is unique and unrivalled.

## CAPACITIES

Standing - 300  
Seated - 180

## NEAREST STATION

Bank  
Monument  
Fenchurch Street



ST PETER'S SQUARE, MANCHESTER

# THE ANTHOLOGIST

ONE ST PETER'S SQUARE

Located in the heart of Manchester, The Anthologist boasts an unrivalled setting overlooking beautiful St Peter's Square. From the open kitchen and striking cocktail bar to a beautiful all year-round alfresco terrace, it's the ideal wedding location.

Offering a striking setting for everything from your hen do and wedding breakfast to the day itself, The Anthologist is a destination you and your guests will never forget.

## CAPACITIES

Standing - 400

Seated - 160

## ALFRESCO TERRACE

50 seated

## NEAREST STATION

Salford Central







---

*PRE-WEDDING*  
CELEBRATIONS  
&  
*GET-TOGETHERS*

---

Weddings aren't just about the day itself; the build-up preparations are all part of the whole experience too. We're experts in hosting all manner of celebrations associated with nuptials, from engagement parties, family suppers and get-togethers to hen and stag parties, rehearsal dinners and girls lunches and brunches.

We can also arrange bespoke activities for groups, so why not kick off your hen or stag do with a creative cocktail masterclass or a cheese and wine pairing. And when it comes to introducing your families to each other, one of our exclusive tutored wine and food tasting sessions is a great conversation starter.





*FOR ALL ENQUIRIES*

---

E: [IDO@DRAKE-MORGAN.CO.UK](mailto:IDO@DRAKE-MORGAN.CO.UK)

 [@DRAKEANDMORGAN](https://twitter.com/DRAKEANDMORGAN)

 [@DRAKEANDMORGAN](https://www.instagram.com/DRAKEANDMORGAN)

 [@DRAKEANDMORGANB](https://www.pinterest.com/DRAKEANDMORGANB)

 [@DRAKEANDMORGANCOLLECTION](https://www.facebook.com/DRAKEANDMORGANCOLLECTION)